

# THORPE TOGETHER

**The quarterly magazine  
for Thorpe Ward residents**

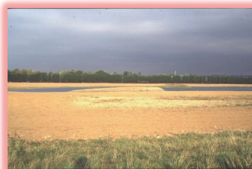
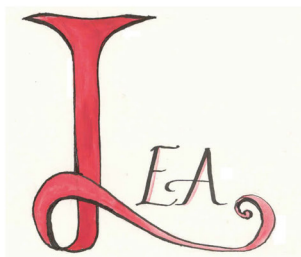


Ayebridges Corner 1984



The M25 at Thorpe Lea 2004

**THE STORY OF CHANGE  
IN THIS PART OF THORPE.**



Site of Iron Age  
farmsteads, with the M25  
in the background.

The area is now used as a  
fishing lake.

**Edition 22  
Autumn 2020**



RIVERMEDE  
COURT  
CINNAMON LUXURY CARE



## Do you recognise the symptoms of Carer Fatigue?

Caring for a loved one at home can be intensely demanding and these pressures can make carers particularly vulnerable to stress, depression and feeling unable to cope.

Talking to someone who understands how you feel might help you find the support you need, which could be a short stay in our beautiful care home.

To find out more about our expert residential and dementia care at Rivermede Court, call Sandra on **01784 819 141**.



### Rivermede Court Care Home

The Avenue, Egham, Surrey, TW20 9AD

e: [rivermede.haa2@cinnamoncc.com](mailto:rivermede.haa2@cinnamoncc.com) w: [cinnamoncc.com/rivermedecourt](http://cinnamoncc.com/rivermedecourt)



# St Mary's Church, Thorpe

Autumn 2020

## Quarterly News

CHARITY NO: 1176929

**Welcome** *St Mary's Church is at the heart of Thorpe Village in Church Approach beside TASIS England off Coldharbour Lane. Our Village Church has been a central presence for Thorpe and surrounding communities since early medieval times and continues to offer a very warm welcome for all. We look forward to you visiting us for worship and your special occasion soon.*



A Message from the Revd Damian Miles, our Vicar.

Back in early March we could not have guessed the level of impact that Covid-19 would have upon the whole world. And in some ways, we are just at the beginning, as we learn how to live with this new virus, which is deadly for so many, although not all. At the start of

lockdown, I moved worship from the Church into the Vicarage study, as did clergy up and down the land. At the start I was completely out of my comfort zone, but soon found that it was both a privilege and a joy to invite so many of you into our home, with one week in early April seeing over 1000 views of the Sunday Eucharist. Our community swung into action with more volunteers than Runnymede needed, and help for neighbours with shopping and even TASIS serving dinners to the elderly and housebound. We celebrated VE Day from our driveways and looked forward to measures being relaxed. And then the real challenge hit; how do we make our St Mary's safe for worship once again. I have to say the team here have been just brilliant and finally, after testing times, we have fully reopened services, while continuing to offer live worship via our Facebook page every day at 10am: [www.facebook.com/StMarysChurchThorpe](https://www.facebook.com/StMarysChurchThorpe). Yes, things are a bit different! Entry is now via the Rutherwyke Room (kitchen door) and people are asked to wear a face covering, wash their hands, and sign in (Test & Trace data). Now we can gather, in a socially distanced way for worship and we look forward to welcoming everyone back. We do so in the knowledge that many continue to suffer because of Covid. So, we pray faithfully for those who are sick, but also those who now struggle with their mental or physical health. We pray for our schools, their children, and staff and those who have lost their livelihoods. Indeed, that is St Mary's Church and Thorpe community at its best, a place where we include everyone and look-out for those in need, seeking to offer a hand-up, with love. Thank you for all you have done to help others at this time. Thank you for caring about your neighbours. May God bless you and yours this Autumn 2020, Damian.

### **From St Mary's Church Registers March - August 2020:**

**Funerals:** 20/4 Anne-Maria Butler; 01/05 Jennifer Hazel Pitman; 01/05 Frances Phoebe Dunning; 02/05 Kim Bliss; 05/05 Robert Michael Castledine; 14/05 Janet Eve Constance Stuffs; 14/05 Pam Miller; 27/05 Eileen Margaret Jarvis; 19/06 Robert Charles Knock; 25/06 Betty Lavinia Vergette; 28/06 Roger Eric Mitchell, 02/07 Julie Edith Ann Kermeen; 30/07 Sir David Kenneth Rowe-Ham; 10/08 Roy Harry Dauncey.

## WEEKLY SERVICES AT ST MARY'S CHURCH, THORPE

### Sundays

8am Holy Communion (Said Eucharist)

**10am Parish Eucharist**

1<sup>st</sup> Sunday monthly

**11:30am Family Service**

4<sup>th</sup> Sunday monthly

12noon Holy Baptisms

**Wednesday & Saturday 10am Said Eucharist**

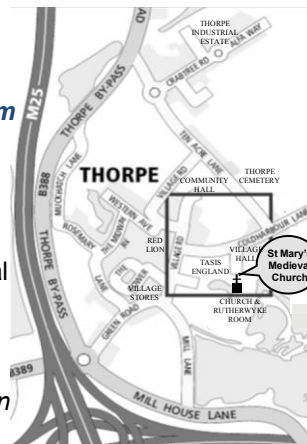
*Worship is live on our Facebook page every day at 10am*

*Did you know St Mary's is just around the corner from you...?*

We serve Thorpe Village, Thorpe Lea, Thorpe Green, Chertsey Lane, Castle End, and surrounding communities.

Visit our church website for more information about your local village church. [www.stmaryschurchthorpe.co.uk](http://www.stmaryschurchthorpe.co.uk)

*For support with planning a wedding, funerals at the crematorium, church, and graveside, to have your child baptised (christened) or just to chat please contact Fr Damian Harrison-Miles at St Mary's Vicarage on 01932 565986.*



## HARVEST FESTIVAL SERVICES

*Sunday 4<sup>th</sup> October 2020*

**in St Mary's Church, Church Approach, Thorpe Village, TW20 8TQ**

**8am Said Harvest Eucharist (Holy Communion)**

**10am Parish Harvest Festival Eucharist**

**11:30am Harvest Family Service**

*In celebration of Harvest we are collecting canned meat and tinned vegetables/tomatoes dried pasta, rice, biscuits, and cereals in aid of White Lodge Centre.*

## ALL SAINTS' DAY – Sunday 1<sup>st</sup> November

8am Said Eucharist (Holy Communion)

**10am Festival Parish Eucharist (also ONLINE)**

7pm Compline by Candlelight

## REMEMBRANCE SUNDAY SERVICES - 8<sup>th</sup> November

8am Said Eucharist (Holy Communion)

10am Said Eucharist in St Mary's Church (also ONLINE)

*If regulations allow 10.50am Community Service of Remembrance*

***At Thorpe War Memorial, Village Road including the Village Act of Witness at 11am. "We Will Remember Them."***

7pm Compline by Candlelight

## MEMORIAL SERVICE – Sunday 25<sup>th</sup> November – 6pm

*A beautiful simple service of celebration as we remember and give thanks to God for those whom we love but see no longer, with prayers, music, readings, poetry and an opportunity to light a candle in memory of our loved ones.*



# THE INDEPENDENT



## Newsletter of THORPE WARD RESIDENTS' ASSOCIATION

**Website:** [www.ThorpeWardResidents.org.uk](http://www.ThorpeWardResidents.org.uk)

**Email:** [Contact@ThorpeWardResidents.org.uk](mailto:Contact@ThorpeWardResidents.org.uk)

**TWRA on Facebook:** <https://www.facebook.com/thorpewardresidentsassociation/>

We hope that all are keeping as well as possible during these difficult times. The pandemic has shown the importance of communities. Thank you to all who have reached out to support neighbours who have needed help.

### **The future of your association: Resident Survey**

As many of you know, membership is renewed annually for a nominal amount and our membership is open to all who live in Thorpe Ward. Your committee meet monthly (and have continued via virtual meetings during the pandemic). Considerable effort is made to ensure we review planning applications, comment on local and national consultations and try to be a voice and conduit for our community. We have also set up a volunteer community litter picking team and continue to send out weekly newsletters to let you know about matters we think may interest you, including any important community information.

However, we are concerned that a large part of the community are not members of the association and are particularly keen to hear from younger residents. We will therefore be sending all households a survey to ask for your feedback on the future of your association. Whether or not you are a member, we need and welcome your views. This is vital to know how we can improve and provide a RELEVANT, vibrant, and sustainable association for your benefit. Please take time to complete and return the survey to us. We have also included a link to the survey on our website homepage should you prefer to complete online.

**Without your feedback, we will not be relevant to you. So, if you are NOT a member, we would really like to hear from you to understand what we can do to attract and retain you as a member.**

### **Committee members**

We are always in need of new Committee members. We are particularly interested in anybody interested in helping us as Secretary and/or support on social media. Please contact us if you can help.

### **Other news bites:**

- **Thorpe and Egham Half Marathon:** The half marathon is hoping to return to the ward in Feb 2021. If you would like to enter and support the association, please contact us via the website.
- **Runnymede Local Plan:** The new Local Plan has now come into effect and can be viewed on Runnymede Borough Council's website.
- **Website:** During lockdown, we moved the association's website to its new platform. This is a reminder that any previous cookies you may have saved prior to April 2020 will not work and you should please delete the prior cookie for SurreyCommunities.info, enter our new website directly in your browser and re-save this. Please also note our new email address.
- **Thorpe Neighbourhood Plan:** The Forum have sent this to Runnymede Borough Council and it will be submitted to the Examiner during August for formal Examination.
- **Flooding:** Your association continues to push for strengthening of local and national guidance and stronger adherence to existing guidance. We have been lobbying your MP, Runnymede Borough Council and the Environment Agency.
- **Food bank:** TWRA donated to the local food bank to help support our local community.
- **Free Servicing:** Colin, who runs Thorpe Garage in Tims Boatyard, is doing servicing for free for all NHS and essential workers (parts not included of course).

Please join the association to show your support for your local community residents association. Please join the association at [www.ThorpeWardResidents.org.uk](http://www.ThorpeWardResidents.org.uk). Thank you.

Take care and stay well.

Nigel Robbins,  
Vice Chairman

## **MILTON PARK FARM - Planning Decision Postponed Again!**

SCC has postponed the decision to grant or to refuse Hanson's eleven year old planning application to quarry Milton Park Farm, Egham again. Please note that the new date on their website is given as 27th November 2020.

## **From your Thorpe Ward Councillors**

Elaine Gill, Linda Gillham and Margaret Harnden

### **Runnymede Local Plan**

The Runnymede Local Plan was adopted at Full Council on 16th July 2020. This will now guide development through to 2030.

There was concern from some residents about Green Belt being removed ,especially from Thorpe and the DERA site at Longcross, but Runnymede still has over 70% of the Borough classified as Green Belt. There are also other constraints such as flooding etc.

There are proposals for at least 7500 homes to be delivered during the lifetime of the Plan

The Local Plan is a constantly evolving document and indeed, the review for the next Local Plan will commence in January 2021!

Obviously, recent news headlines have said that the Government is saying we must build, build, build! There is a limit though to what Runnymede can achieve and time will tell how much more we can be expected to deliver in the coming years.

That is why, we feel Neighbourhood Plans are even more important and I know Cllr. Linda Gillham will expand on that.

We now await these applications coming forward, some of which are in areas where Green Belt restrictions have been removed in Thorpe Ward These will be closely monitored by TWRA, and Thorpe Neighbourhood Forum if applications are in the designated area

### **Thorpe Neighbourhood Plan**

Thorpe Neighbourhood Forum is very excited to report that the full plan and all supporting documents were submitted to RBC on the 26th June and will be examined in late August. At the end of this examination the Council will propose that the plan is adopted and then it will become another part of the guidance that developers will need to consider when planning to develop land in Thorpe. (see [thorpeforum.org.uk](http://thorpeforum.org.uk))

This has been a long haul of four years and involved many hours, volunteered, working to produce this plan but I feel that Thorpe will now feel the benefit of having expressed its views for the future as the Government strives to change the planning process. There are strong signs that local Neighbourhood Plans will be have a significant place in future development decisions.

Four other areas in Runnymede are now starting on this journey to produce their own plans so I can say the Thorpe Forum are very proud not only to have produced the first plan in the borough but also to have led the way through the process that has become more difficult with changes to legislation and complications to the flood plain. We have had the benefit of huge support from planning officers but they too have learned from our experiences.

Due to Covid 19 we are not able to take this plan to referendum but it is expected this will happen in May 2021 and then we shall seek your support.



## Surrey County Council Makes a Bid to Abolish Runnymede!

The Government are proposing to put out a white paper in early September to consult on "recovery and devolution". In advance of this, Surrey County Council has submitted a bid to Government suggesting they become one unitary authority and **all 11 boroughs and districts are abolished.**

This would mean the loss of Runnymede Council and the new Council would become the authority for 1.2 million residents. This is larger than Birmingham!

Independent Councillors across Surrey, of which there are 167, have come together to oppose this suggestion and will be sending out information to residents as soon as the situation is clearer.

Surrey will have to consult residents and this could be in the autumn with the first transition council elected in May 2021.

All Thorpe Councillors are involved in discussions about this and the future of Runnymede Council, made more poignant because we are expecting Cllr. Elaine Gill to become Mayor in October 2020 for eighteen months with Cllr. Margaret Harnden following as her deputy to take the Mayoralty in May 2022. This would be a huge honour for Thorpe ward.

### Egham Computer Solutions

**Home Computers, Tablets  
and Smartphones**

**I can help with troubleshooting and  
repairs, new installations,  
wifi, virus protection and removal.**

**I can also advise on how to get the  
best out of your device and make it  
work for you in your everyday life.**

**Service a priority, not profit. Local  
references available.**

**Call Phil on 07749746233**  
**www.eghamcs.co.uk**

### Thorpe Parochial Charities Giles Travers Educational Charity

**Can we help  
you?!**



The Trustees of Thorpe Parochial Charities invite applications from young people for support with the cost of further education from the Giles Travers Educational Charity

**Small grants are available from  
the charity to assist students with  
the cost of books, equipment,  
travel expenses etc while in  
further education**



**To qualify, applicants must be under 21  
years old and a resident within the  
ancient parish of Thorpe**

Applications should be made in writing to:

The Clerk to the Trustees, Thorpe Parochial Charities,  
21 The Gower, Thorpe, Egham, Surrey TW20 8UB

stating what the grant is needed for, your age and the educational  
establishment (to be) attended

**This is a reduced size edition of Thorpe Together as many regular contributors have not been able to plan any talks, plays, events etc due to the Covid-19 pandemic regulations in place. We hope to be back to normal by the winter issue. Please contact Margaret Harnden, 01784-432992 or Sharon Young, info@thorpevillagehall.org 07973-710228 if you wish to publicize your event or organization in the next issue.**

**For a copy of the Thorpe Lea  
book shown on the front page,  
contact the author, Jill  
Williams on  
01932-560476**

# DELIVERING PEACE OF MIND



## The Signature way

- Award winning exceptional care
- Spacious apartment accommodation
- Intelligently designed homes
- Five-star amenities
- Highly skilled professional care and nursing teams
- All our care homes are CQC Good or Outstanding

Signature at Parklands Manor, Chertsey is now reopen to visitors and welcoming new residents.

Our luxury homes across London and the Home counties are now re open to visitors. We are actively taking new admissions for those who could benefit from our industry leading accommodation and care.

We offer assisted living, nursing and dementia care in luxury apartment style accommodation with facilities such as kitchenettes and wet rooms allowing residents to isolate in comfort if needed.

We have also invested heavily in specialist training, equipment and rigorous additional health and safety protocols to uphold the safest environment possible, ensuring total peace of mind for you and your loved ones and allowing us to robustly deal with any potential future risks.

Call Sonia or Judy today to book your appointment or video tour:

01932 283419

enquiries.parklands@signaturesl.co.uk  
**signature-care-homes.co.uk**

Parklands Drive off Bittams Lane  
Chertsey, Surrey, KT16 9FS

**Signature**  
delivering peace of mind